



65 Newbury Street, Portland, ME 04101-4218 • Voice 207.761.9000 • [www.portcityarch.com](http://www.portcityarch.com)

---

**Post Bid Addendum No. 1**

To the  
Drawings & Specifications  
For  
**Fire Station**

Rumford, Maine

**Request for Proposals / Qualifications (RFP)  
Construction Management Services**

February 8, 2022

This addendum is to be added to and become part of the RFP dated **January 28, 2022**.  
Acknowledge receipt of this addendum in the space provided on the Bid Form. Failure to do so may  
subject the bidder to disqualification.

It is the responsibility of General bidders to inform sub-bidders of any addendum provisions affecting  
their work.



65 Newbury Street, Portland, ME 04101-4218 • Voice 207.761.9000 • [www.portcityarch.com](http://www.portcityarch.com)

---

**GENERAL CLARIFICATIONS:**

- Questions will not be accepted after noon on February 14, 2022.
- Please direct any questions to Andy Hyland AND Lita Semrau, AIA, Port City Architecture, [lita@portcityarch.com](mailto:lita@portcityarch.com) 207-761-900 (o) or 207-756-4333 (c).
- Please see attached Schematic Plans (11-11-2021) and Renderings (10-29-2021).

**END OF ADDENDUM #3**



RUMFORD  
FIRE DEPARTMENT



PORT CITY  
ARCHITECTURE



RUMFORD  
FIRE DEPARTMENT

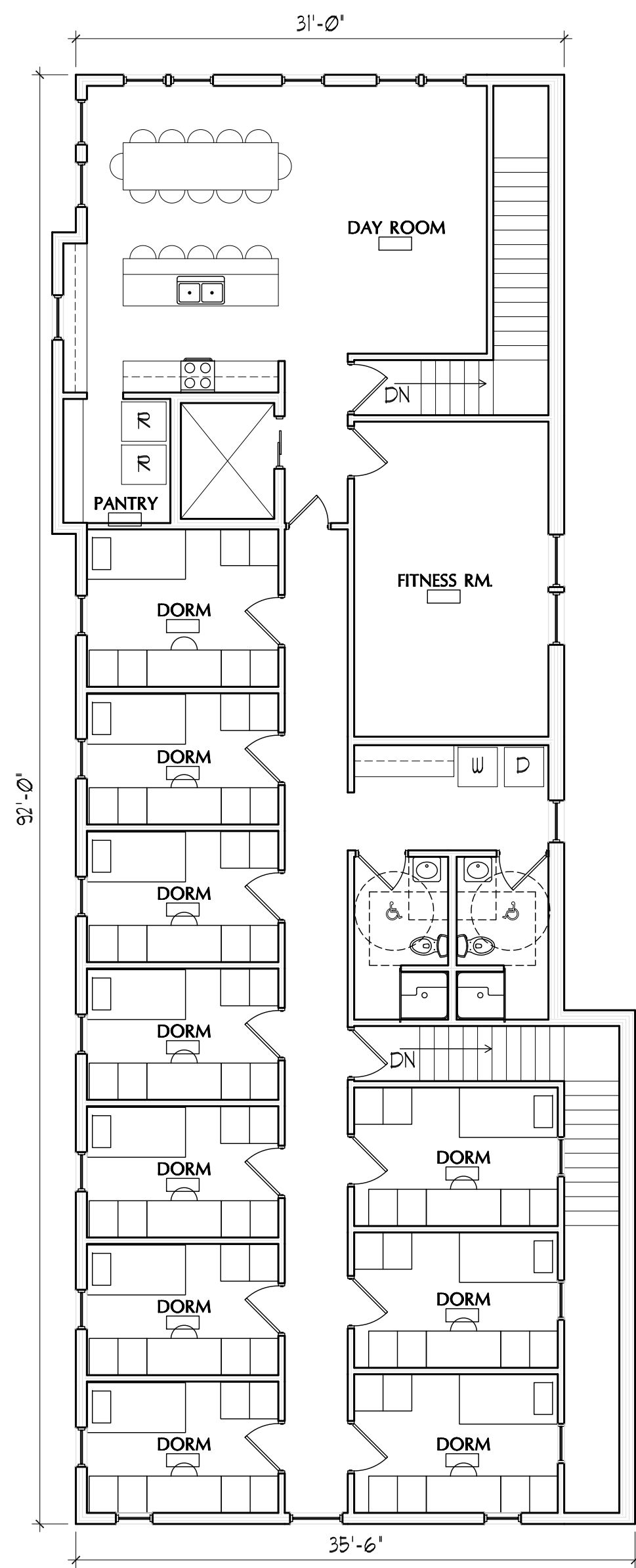




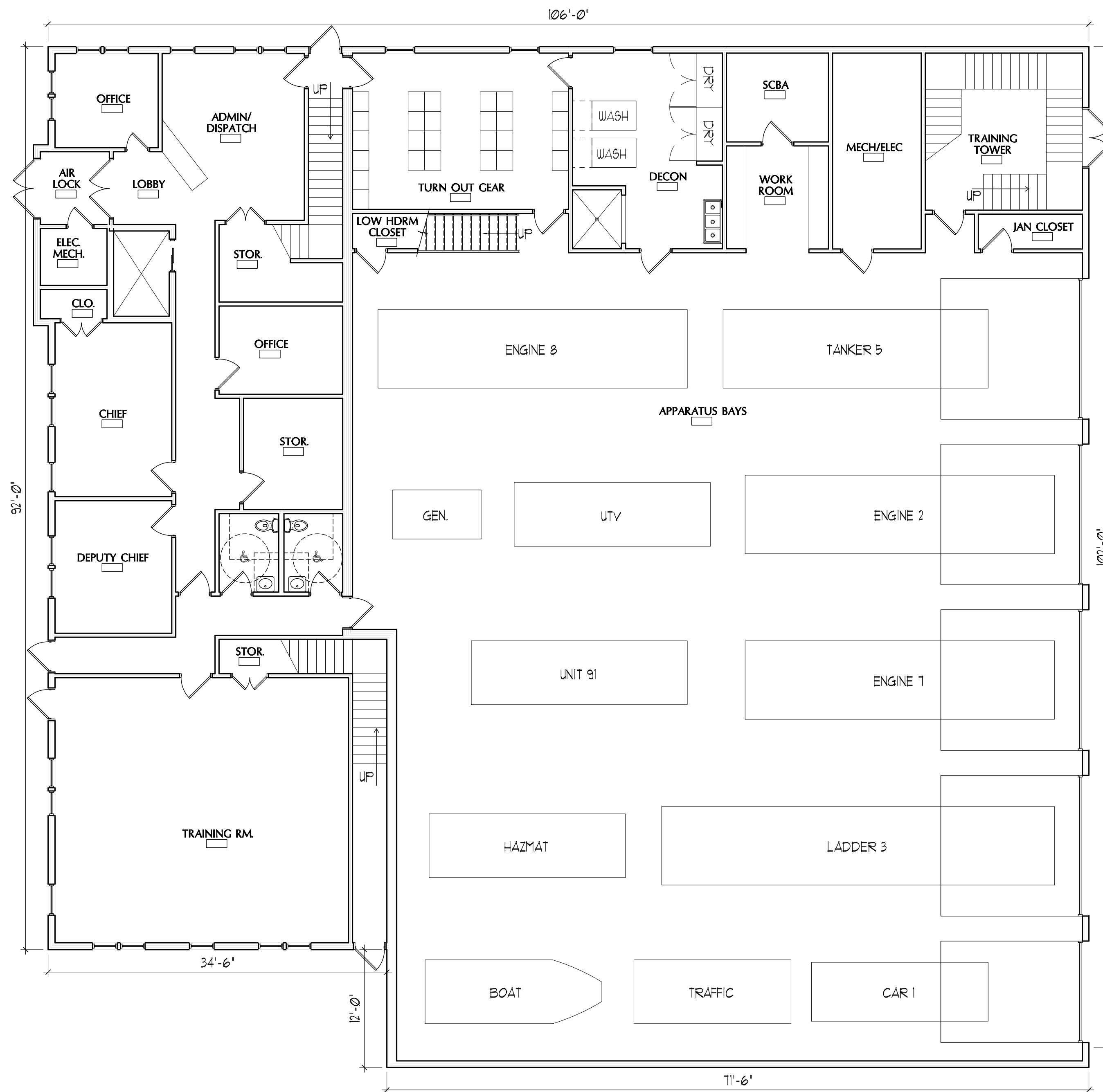




IF THIS SHEET IS NOT 24 X 36 IT IS A REDUCED SCALE PRINT - SCALE ACCORDINGLY



2 SECOND FLOOR PLAN SCALE: 1/8" = 8'-0"



1 FIRST FLOOR PLAN SCALE: 1/8" = 8'-0"



65 NEWBURY STREET  
PORTLAND, ME 04101  
207.761.9000  
fax: 207.761.2010

### RUMFORD FIRE STATION RUMFORD, MAINE


Date Issued: NOVEMBER 11, 2021

Project Number: 21419

Scale: SHEET NAME

### PROPOSED FLOOR PLANS

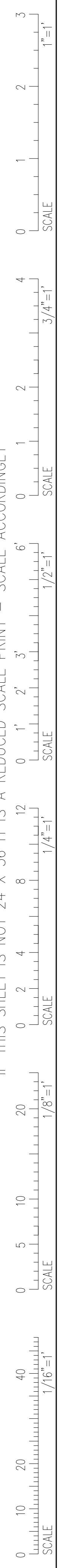
Drawn By: KB, JP  
Checked By: ACH, JP

# A-1

ISSUED FOR PROGRAMMING  
NOT FOR CONSTRUCTION



IF THIS SHEET IS NOT 24 X 36 IT IS A REDUCED SCALE PRINT - SCALE ACCORDINGLY



FALMOUTH ST.

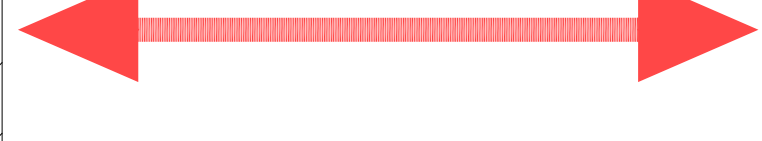
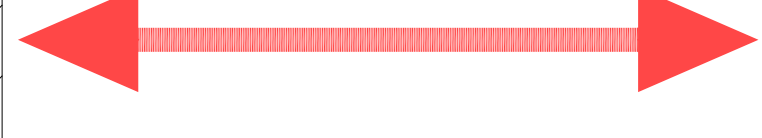
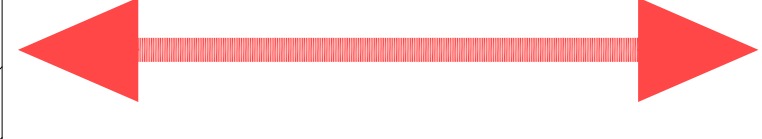
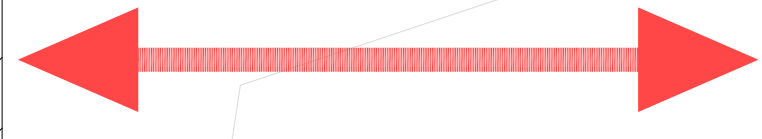
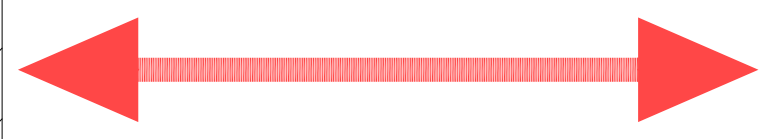
2'-0" CONTOURS  
PARCEL LINE

FIRE  
PARKING

FIRE/PUBLIC  
PARKING

PROPOSED BUILDING FOOTPRINT  
10,638 SF  
TOTAL BUILDING  
13,666 SF

ESSEX AVE.



FIRE  
PARKING

1 PROPOSED SITE PLAN

SCALE: 1/8" = 8'-0"

ISSUED FOR  
PROGRAMMING  
NOT FOR  
CONSTRUCTION



65 NEWBURY STREET  
PORTLAND, ME 04101  
207.761.9000  
fax: 207.761.2010

RUMFORD FIRE  
STATION  
RUMFORD, MAINE

Date Issued: NOVEMBER 11, 2021  
Project Number: 21419

SHEET NAME  
PROPOSED SITE  
PLAN

Drawn By: KB, JP  
Checked By: ACH, JP

A-2